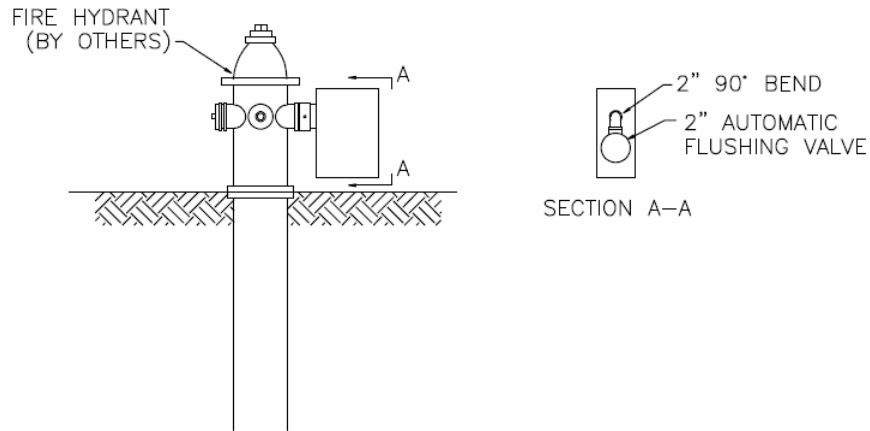


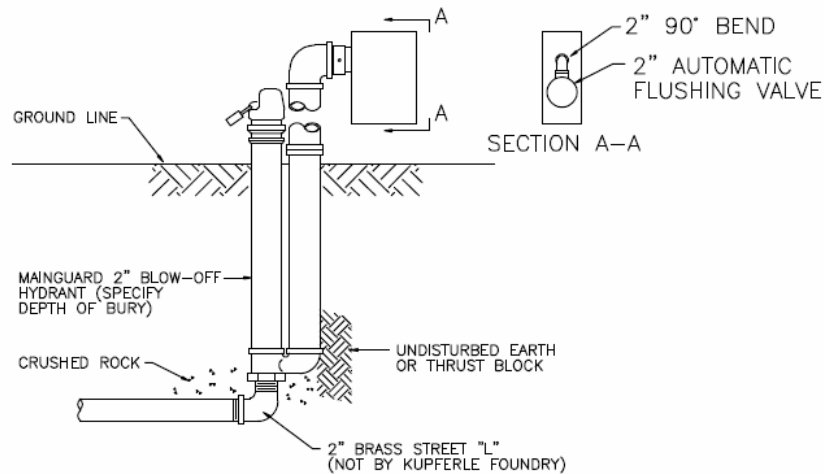
HYDRANT WITH AUTO FLUSHER



AUTOMATIC FLUSHING DEVICES SHALL BE ATTACHED TO HYDRANT IN THE FOLLOWING LOCATIONS_____

A 2-1/2" NST SWIVEL CONNECTION WILL LEAD INTO A 2" AUTOMATIC SOLENOID VALVE. AUTOMATIC SOLENOID VALVE SHALL HAVE INTERNAL, SELF-CLEANING DEBRIS SCREEN, AND HAVE A 220 PSI RATING. EACH UNIT SHALL BE FURNISHED WITH A STAND-ALONE VALVE CONTROLLER. VALVE CONTROLLER WILL NOT REQUIRE A SECOND HAND HELD DEVICE FOR PROGRAMMING, MUST HAVE A MINIMUM CAPABILITY OF 9 POSSIBLE FLUSHING CYCLES PER DAY FOR UP TO FOUR HOURS EACH FLUSH, SHALL BE SUBMERSIBLE TO 12 FEET, OPERATE WITH A 9 VOLT BATTERY, AND HAVE RESIN-SEALED ELECTRICAL COMPONENTS. SOLENOID SHALL HAVE NO LOOSE PARTS WHEN REMOVED FROM VALVE. ALL COMPONENTS SHALL BE HOUSED INSIDE AN ALUMINUM, LOCKABLE ENCLOSURE, WITH 1/2" PERFORATIONS IN BOX FLOOR TO DIFFUSE FLUSHING WATER. REMOVABLE FLOOR PLATE SHALL ALLOW TO A 2" FIP OUTLET IF NEEDED. EACH BOX SHALL BE POWDER-COATED, AND COLOR SHALL BE (RED OR YELLOW) AS MANUFACTURED BY KUPFERLE FOUNDRY COMPANY MODEL #9700, ST. LOUIS, MO, 1-800-231-3990, OR APPROVED EQUAL.

NO. 77 WITH AUTO FLUSHER



AUTOMATIC FLUSHING DEVICES SHALL BE ATTACHED TO HYDRANT IN THE FOLLOWING LOCATIONS_____

A 2-1/2" NST SWIVEL CONNECTION WILL LEAD INTO A 2" AUTOMATIC SOLENOID VALVE. AUTOMATIC SOLENOID VALVE SHALL HAVE INTERNAL, SELF-CLEANING DEBRIS SCREEN, AND HAVE A 220 PSI RATING. EACH UNIT SHALL BE FURNISHED WITH A STAND-ALONE VALVE CONTROLLER. VALVE CONTROLLER WILL NOT REQUIRE A SECOND HAND HELD DEVICE FOR PROGRAMMING, MUST HAVE A MINIMUM CAPABILITY OF 9 POSSIBLE FLUSHING CYCLES PER DAY FOR UP TO FOUR HOURS EACH FLUSH, SHALL BE SUBMERSIBLE TO 12 FEET, OPERATE WITH A 9 VOLT BATTERY, AND HAVE RESIN-SEALED ELECTRICAL COMPONENTS. SOLENOID SHALL HAVE NO LOOSE PARTS WHEN REMOVED FROM VALVE. ALL COMPONENTS SHALL BE HOUSED INSIDE AN ALUMINUM, LOCKABLE ENCLOSURE, WITH 1/2" PERFORATIONS IN BOX FLOOR TO DIFFUSE FLUSHING WATER. REMOVABLE FLOOR PLATE SHALL ALLOW TO A 2" FIP OUTLET IF NEEDED. EACH BOX SHALL BE POWDER-COATED, AND COLOR SHALL BE (RED OR YELLOW) AS MANUFACTURED BY KUPFERLE FOUNDRY COMPANY MODEL #9700, ST. LOUIS, MO, 1-800-231-3990, OR APPROVED EQUAL.